



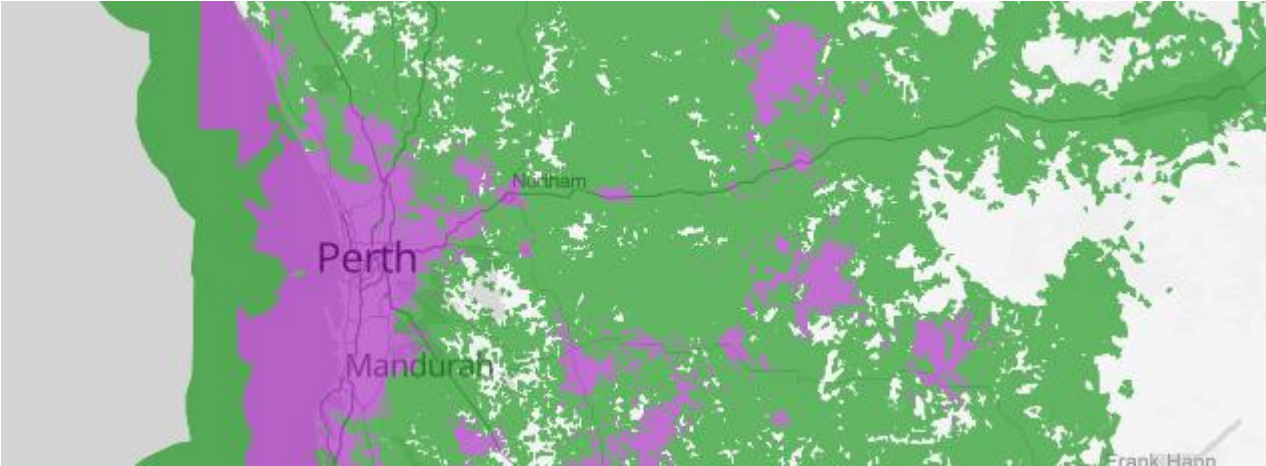
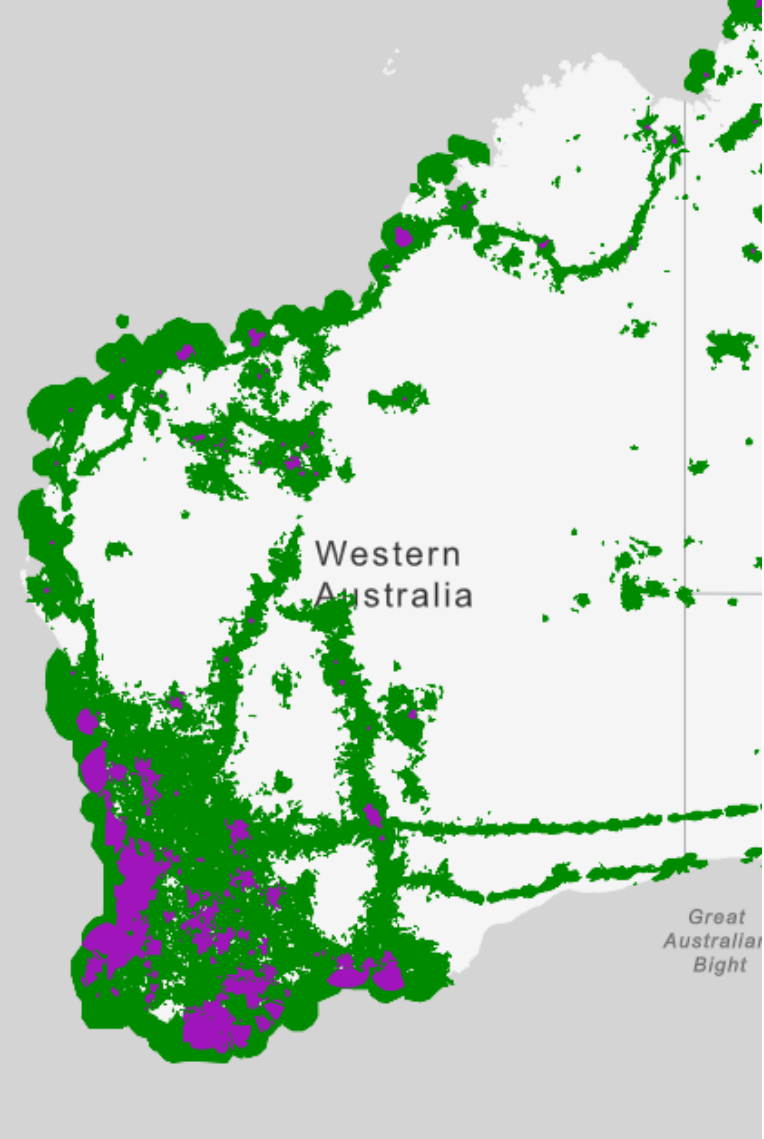
Vehicle as a Node (VaaN)

A look at how this is changing the
landscape for PSMB

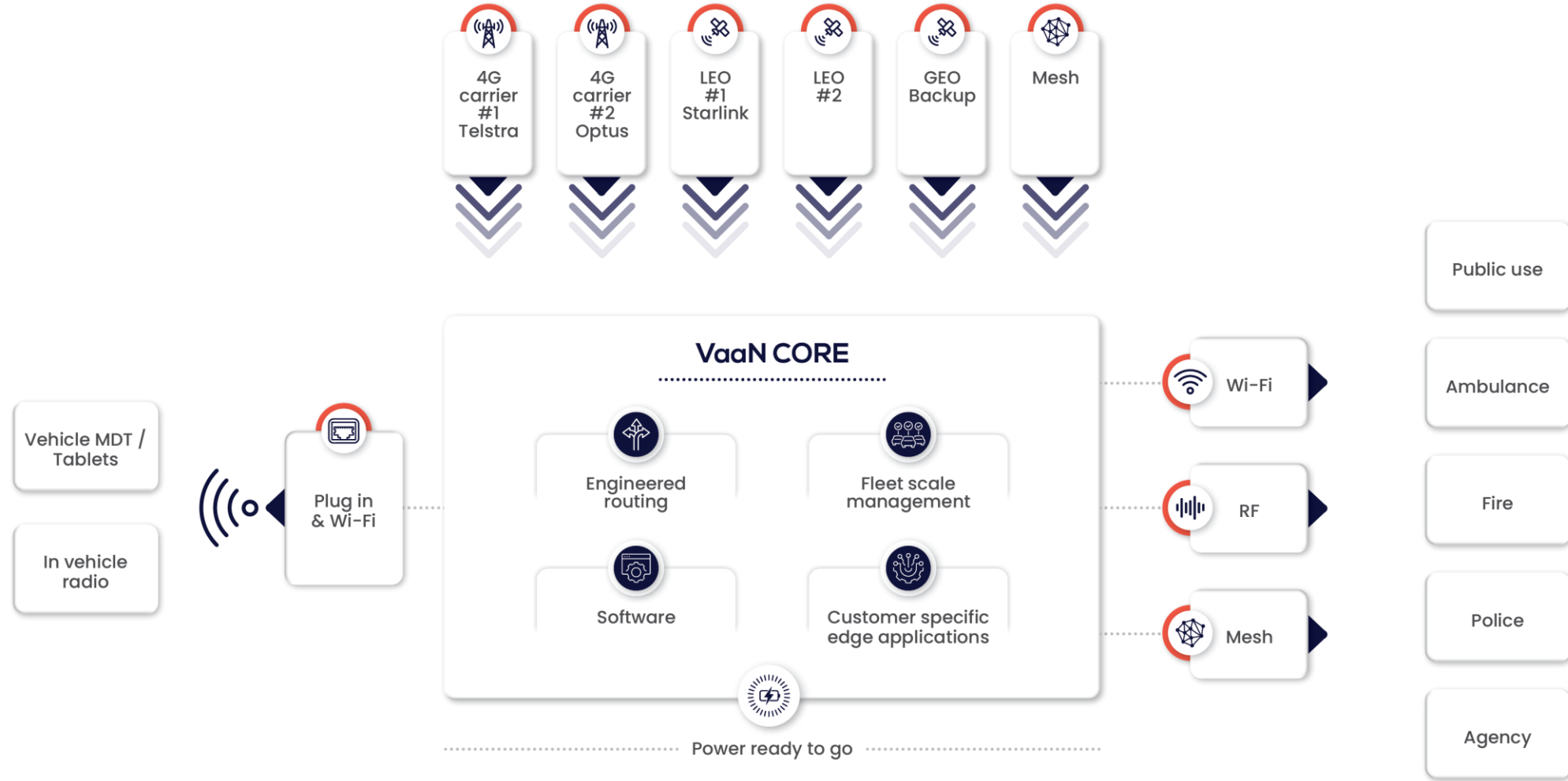
Graham Tait | Hypha Solutions



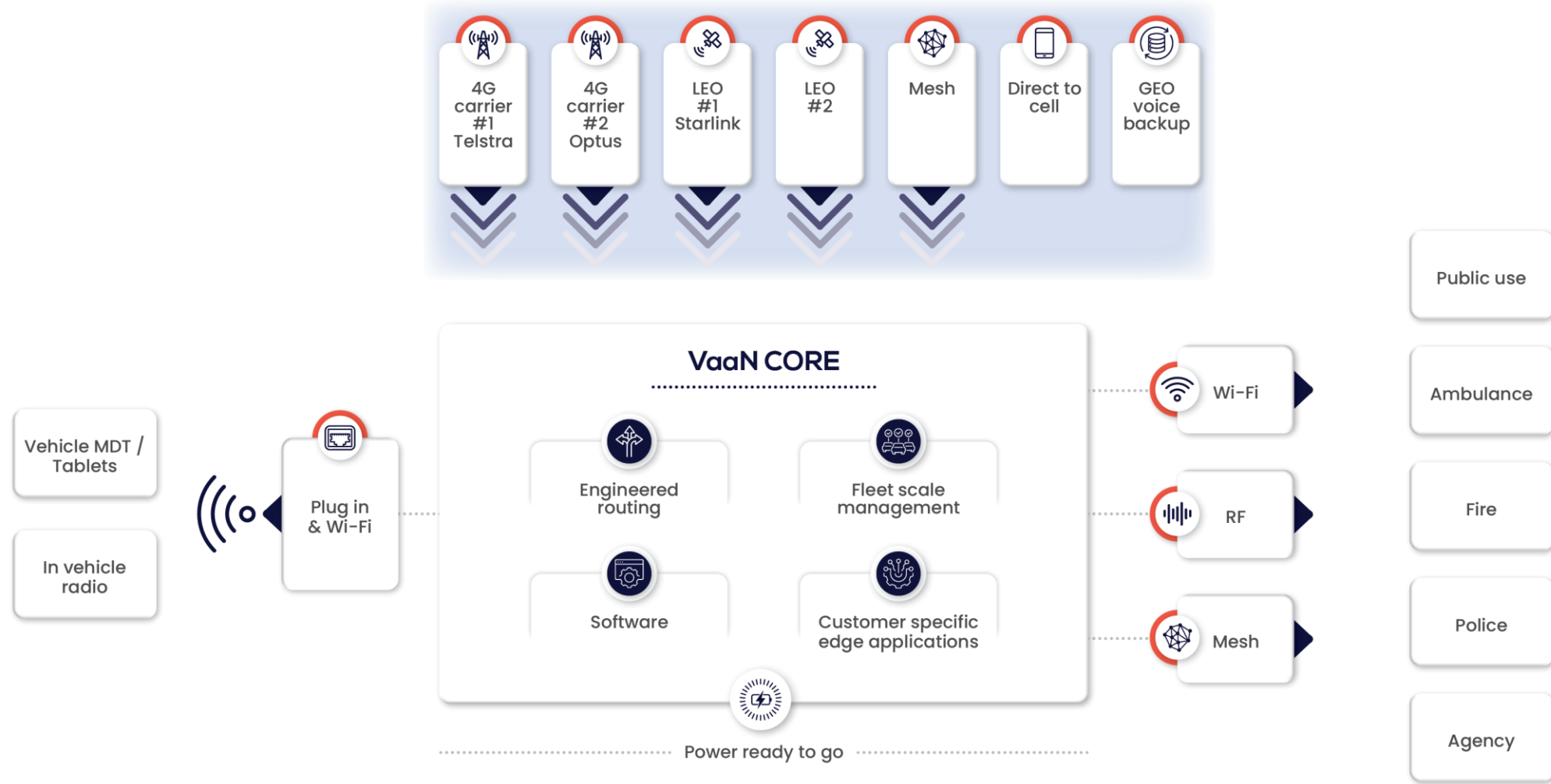
Practical coverage | Geography map



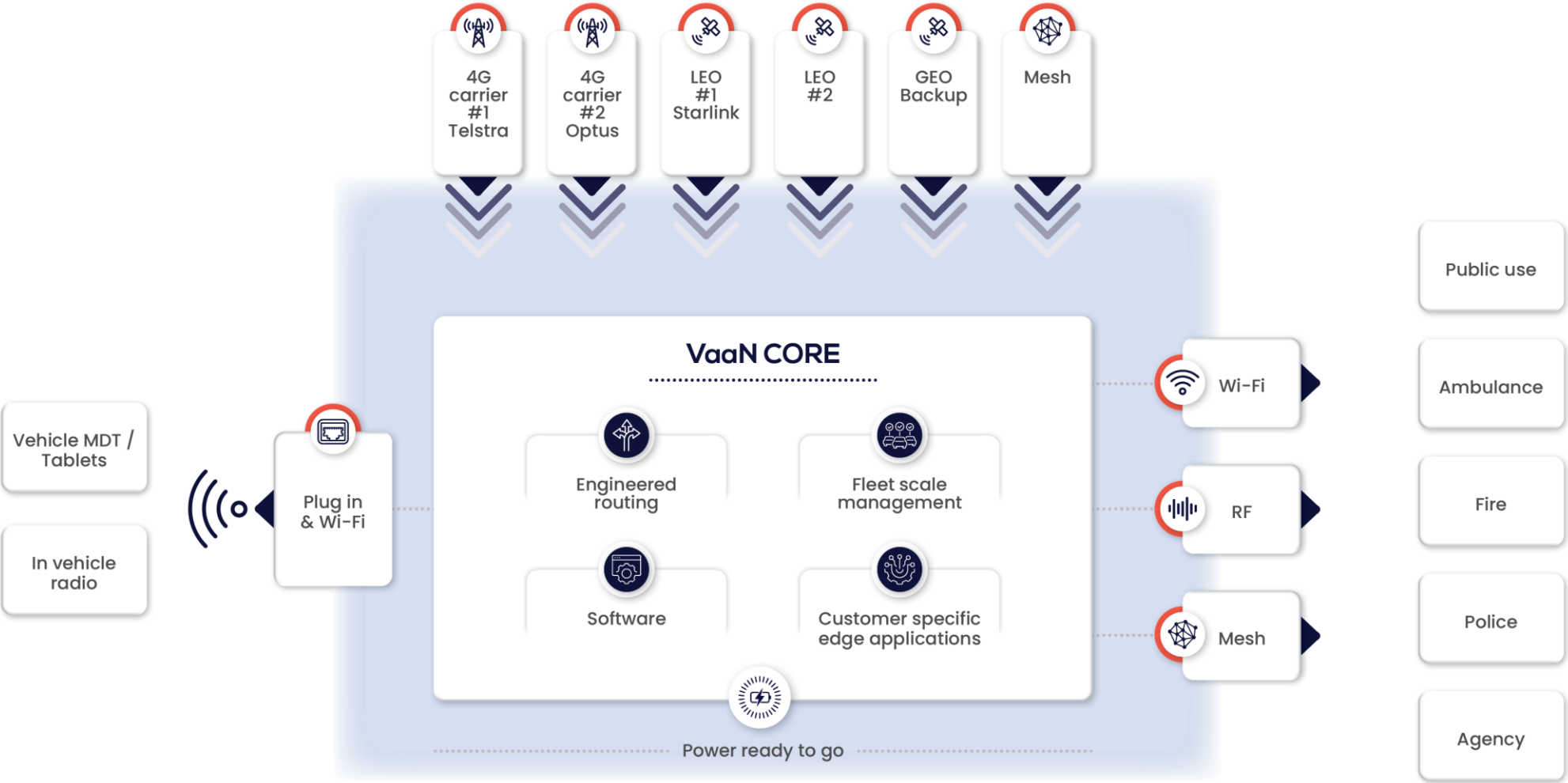
Vehicle as a Node (VaaN) | Ecosystem



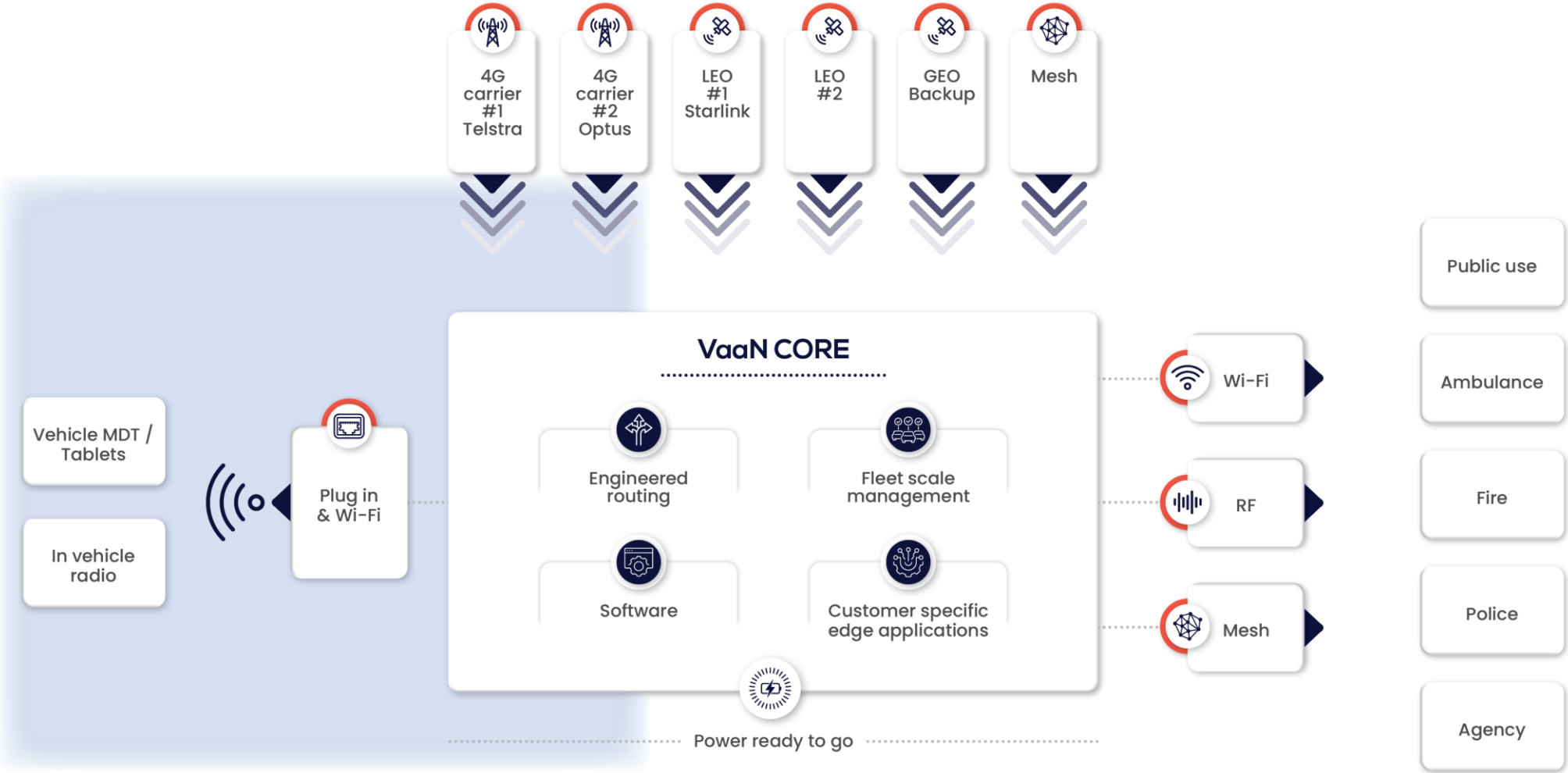
VaaN | Bearer plugins



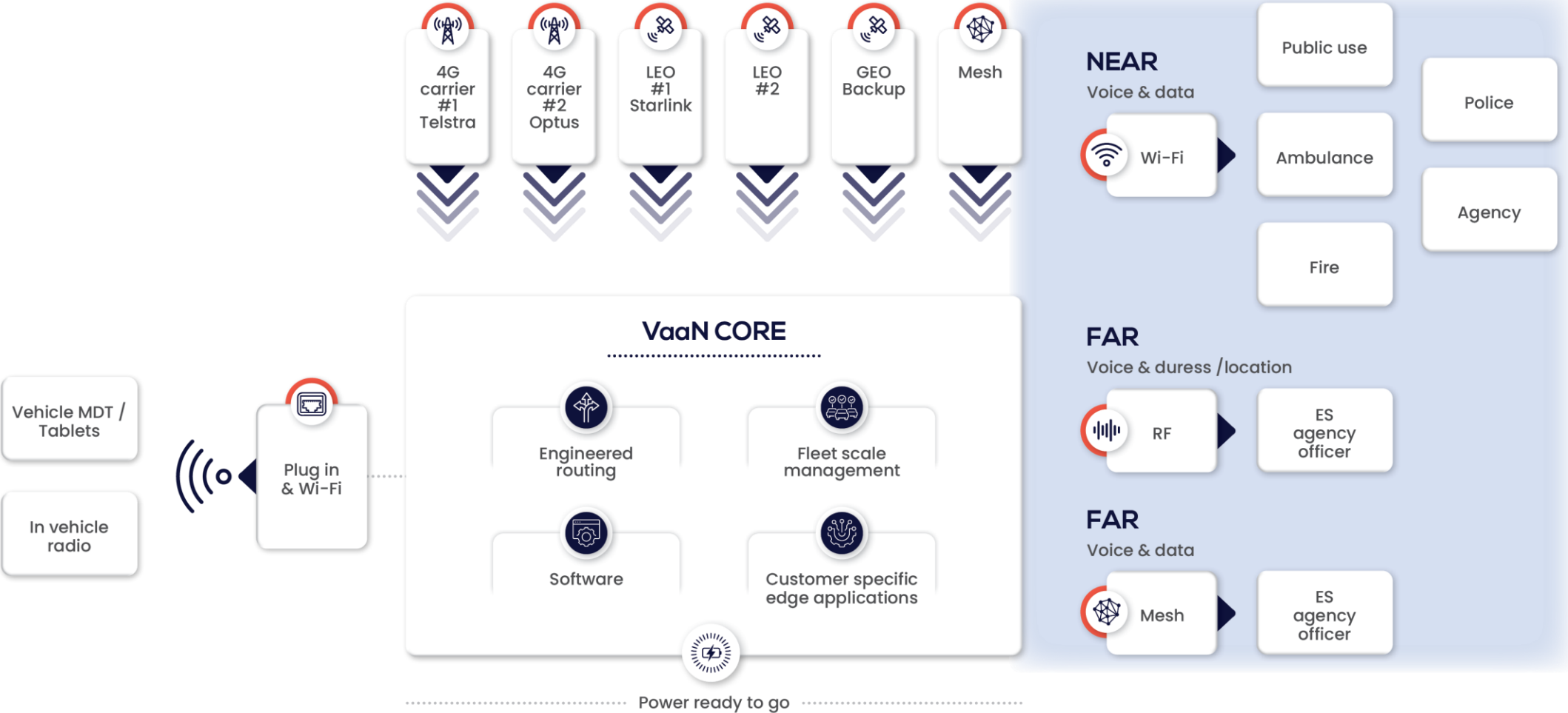
VaaN | Core



VaaN Plugins | In vehicle use



VaaN Plugins | Out of vehicle use



VaaN | Why

- Coverage
- Cost
 - No towers
 - Leverage retail consumer (4G/5G) (but don't rely on it)
 - Leverage PSMB when (and if) available
 - Spend rollout on a vehicle-by-vehicle basis
- Self powered in disasters
- All-in-one fast deployments
- Bring the network with you
- Data – broadband as an enabler – it's a data world



NSWRFS | Case Study – Value of VaaN



Demonstrated multi-agency coordination in the most difficult environments.

Directly contributed to:

- Faster rescue
- Improved patient outcome
- Crew safety

Validates investment in remote comms tech for emergency response.

“The crew would have been isolated both physically and technologically...” – Hills District Inspector Nathan Barnden

“VaaN bridged a critical communications gap, enabling effective command and control.”

NSWRFS | Case Study – Value of Vaan



VaaN | and PSMB

- PSMB Definition
- VaaN enhances PSMB
- PSMB enhances VaaN





VaaN

The enabler for
emergency services and
commercial entities